

RETEKESS

Queue Wireless Calling System User Manual T113S



Wireless calling system

Retekess T113S

Queue Wireless Calling System User Manual

Summary

Thanks for choosing the queue wireless calling system. It adopts RF wireless technology with millions of different learning codes. The system includes 999-channel call buttons keypad and portable buzzer&vibration receivers. The call button keypad has 16 battery charging slots. Each receiver is rechargeable and labeled with a number. In standby status, it is plugged into the charging slot, while the client places an order, he/she will be dispatched one receiver with a number, when the order is ready, press the keypad to call the number, the client will get it through the buzzer/vibration/LED indications.

The queue system greatly improve the work efficiency and avoid the client waiting in a long queue. It is widely used in fast food restaurant, dessert shop, auto 4S shop or other queue occasions.

Features

- ◆ 996 channels keypad call buttons
- ◆ 16 batteries charging slots
- ◆ Portable rechargeable vibration & buzzer receiver
- ◆ Independent storage memory avoiding data lost
- ◆ High receive sensitivity
- ◆ Self testing while power on
- ◆ Beautiful and fashionable designing

Technical data

Receiver	
Working voltage	DC3.7V(200mAh Li-polymer battery)
Charging voltage	DC5V
Working frequency	433.92MHz
Standby current	10±5mA
Working current	75±10mA (vibration) 100±20mA (vibration+buzzer)
Receive sensitivity	-107±2dBm
Battery capacity	200mAh
Decoder	Learning code (AM)
Dimmension	51*104*10mm

Keypad call button	
Working voltage	DC 12V/2A power adapter
Working frequency	433.92MHz
Standby current	24±5mA
Transmit current	100±30mA
Encoder	Learning code (AM)
Dimmension	157*234*36mm

Diagram of call button keypad

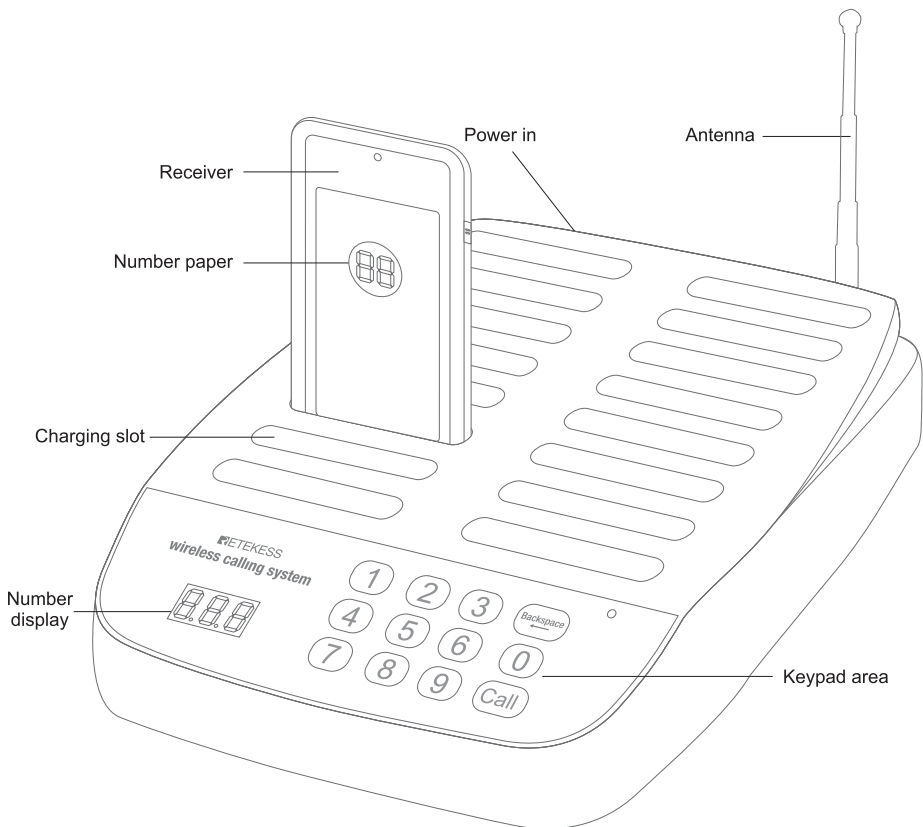
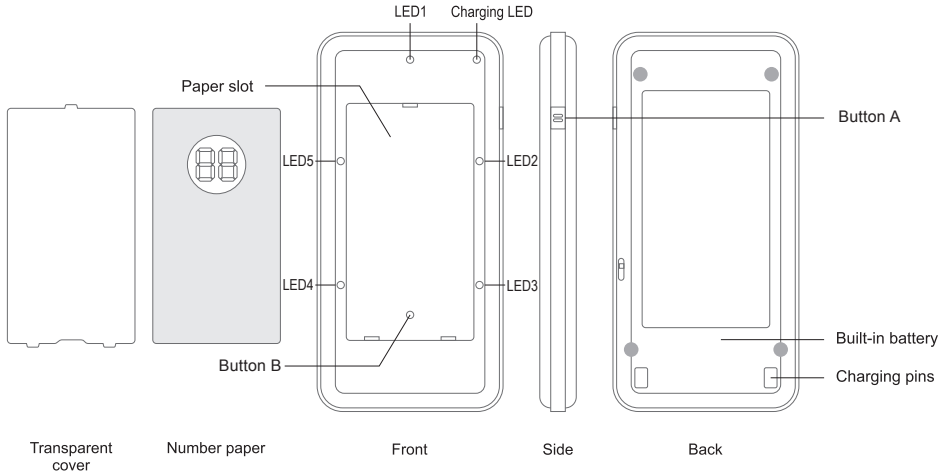


Diagram of receiver



Instructions

1. Use Operation

First, connect the host to power source by adapter, then insert the receiver into the charger slot. Please program after 10min charging at least.

2. Program

Press button B while power on, LED2 and LED5 both light. Then input number on the keyboard, and press "CALL". The receiver beeps twice to indicate program is done.

3. Change Receiver's Number

Repeat step 2, the original number will be replaced with new number. Previous number will be cleared.

4. Remind Time

The remind time of the receiver is 30s.

5. Receiver Power ON/OFF

Hold button B till the receiver vibrates and indicator off, then release, receiver is power off. Press button B or insert the receiver to host both can power on again.

Input 999 on the host and press button "CALL", all charging receivers will be off. Unplug the host power and re-power on again, all charging receivers will be on.

6. Change the pagers' calling mode to silent mode

When the pagers are in the charging state, press the "998" button and the call button on the keypad. The pagers in the charging state now are in the silent mode, it only flash and vibrate when keypad call them. Press the "997" button and the call button on the keypad. The calling mode of pagers which in the charging state will change to the ringing mode. When keypad call them, the pagers flash, vibrate and beep.

7. Working State of Receiver

Power Off State: All LED off.

Charging State: LED1 always on. Charging indicator is on when battery is full.

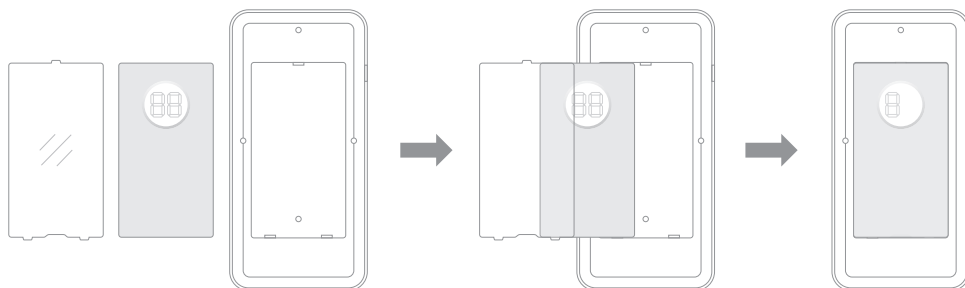
Standby State: LED1 flashes.

Reminding State: 5 LEDs flash, receiver vibrates and beeps. Press button A to stand by again.

Change number paper

Take out the transparent plexiglass cover in the front of the receiver, then put a number paper inside the paper slot. And then put back the cover.



Note: While do the pairing operation, take out the cover and paper firstly.



Charge the receiver

Plug the receiver to the charging slot, the blue charging LED indicator will flicker, while the battery is full, the LED indicator will be on all the time.

FAQ

Problems	Reasons	Solutions
While power on, the number display on keypad is not on.	The power adaptor is broken.	Change the power adaptor. 
The distance of some receiver gets near.	The power of battery is low.	Charge the battery in time.
Receiver cannot get any signal from keypad call button.	The pairing is deleted; The number is not correct.	Pair the receiver again to the keypad. 
Forget the number of receiver.		Delete the pairing first, then pair it again.

Packing List

Name	Quantity
Call button keypad	1 pc
Receiver	16 pcs
Power adaptor	1 pc
User manual	1 pc

Precautions

RF ENERGY EXPOSURE AND PRODUCT SAFETY GUIDE



ATTENTION!

Before using this radio, read this guide which contains important operating instructions for safe usage and RF energy awareness and control for compliance with applicable standards and regulations.

This radio uses electromagnetic energy in the radio frequency (RF) spectrum to provide communications between two or more users over a distance. RF energy, which when used improperly, can cause biological damage.

All Reteless radios are designed, manufactured, and tested to ensure they meet government-established RF exposure levels. In addition, manufacturers also recommend specific operating instructions to users of the radios. These instructions are important because they inform users about RF energy exposure and provide simple procedures on how to control it.

Please refer to the following websites for more information on what RF energy exposure is and how to control your exposure to assure compliance with established RF exposure limits: <http://www.who.int/en/>

Local Government Regulations

When radios are used as a consequence of employment, the Local Government Regulations requires users to be fully aware of and able to control their exposure to meet occupational requirements.

Exposure awareness can be facilitated by the use of a product label directing users to specific user awareness information. Your Reteless radio has a RF Exposure Product Label. Also, your Reteless user manual, or separate safety booklet includes information and operating instructions required to control your RF exposure and to satisfy compliance requirements.

Radio License (if appropriate)

Governments keep the radios in classification, business radios operate on radio frequencies that are regulated by the local radio management departments (FCC, ISED, OFCOM, ANFR, BFTK, Bundesnetzagentur...). To transmit on these frequencies, you are required to have a license issued by them. The detailed classification and the use of your radios, please contact the local government radio management departments.

Use of this radio outside the country where it was intended to be distributed is subject to government regulations and may be prohibited.

Unauthorized modification and adjustment

Changes or modifications not expressly approved by the party responsible for compliance may void the user's authority granted by the local government radio management departments to operate this radio and should not be made. To comply with the corresponding requirements, transmitter adjustments should be made only by or under the supervision of a person certified as technically qualified to perform transmitter maintenance and repairs in the private land mobile and fixed services as certified by an organization representative of the user of those services.

Replacement of any transmitter component (crystal, semiconductor, etc.) not authorized by the local government radio management departments equipment authorization for this radio could violate the rules.

FCC Requirements:

- This device complies with part 15 of the FCC Rules. Operation is subject to the following two conditions:
 - (1) This device may not cause harmful interference, and
 - (2) this device must accept any interference received, including interference that may cause undesired operation.
- This equipment has been tested and found to comply with the limits for a Class B digital device, pursuant to Part 15 of the FCC Rules. These limits are designed to provide reasonable protection against harmful interference in a residential installation.

This equipment generates uses and can radiate radio frequency energy and, if not installed and used in accordance with the instructions, may cause harmful interference to radio communications. However, there is no guarantee that interference will not occur in a particular installation. If this equipment does cause harmful interference to radio or television reception, which can be determined by turning the equipment off and on, the user is encouraged to try to correct the interference by one or more of the following measures:

- Reorient or relocate the receiving antenna.
- Increase the separation between the equipment and receiver.
- Connect the equipment into an outlet on a circuit different from that to which the receiver is connected.
- Consult the dealer or an experienced radio/TV technician for help.

CE Requirements:

- (Simple EU declaration of conformity) Henan Eshow Electronic Commerce Co.,Ltd declares that the radio equipment type is in compliance with the essential requirements and other relevant provisions of RED Directive 2014/53/EU and the ROHS Directive 2011/65/EU and the WEEE Directive 2012/19/EU; the full text of the EU declaration of conformity is available at the following internet address: www.retekess.com.
- Disposal

The crossed-out wheeled-bin symbol on your product, literature, or packaging reminds you that in the European Union, all electrical and electronic products, batteries, and accumulators (rechargeable batteries) must be taken to designated collection locations at the end of their working life. Do not dispose of these products as unsorted municipal waste. Dispose of them according to the laws in your area.



IC Requirements:

Licence-exempt radio apparatus

This device contains licence-exempt transmitter(s)/receiver(s) that comply with Innovation, Science and Economic Development Canada's licence-exempt RSS(s). Operation is subject to the following two conditions:

- (1) This device may not cause interference.
- (2) This device must accept any interference, including interference that may cause undesired operation

of the device.

Le présent appareil est conforme aux CNR d'Industrie Canada applicables aux appareils radio exempts de licence. L'exploitation est autorisée aux deux conditions suivantes :

- (1) l'appareil ne doit pas produire de brouillage;
- (2) l'utilisateur de l'appareil doit accepter tout brouillage radioélectrique subi, même si le brouillage est susceptible d'en compromettre le fonctionnement.

RF Exposure Information

- DO NOT operate the radio without a proper antenna attached, as this may damage the radio and may also cause you to exceed RF exposure limits. A proper antenna is the antenna supplied with this radio by the manufacturer or an antenna specifically authorized by the manufacturer for use with this radio, and the antenna gain shall not exceed the specified gain by the manufacturer declared.
- DO NOT transmit for more than 50% of total radio use time, more than 50% of the time can cause RF exposure compliance requirements to be exceeded.
- During transmissions, your radio generates RF energy that can possibly cause interference with other devices or systems. To avoid such interference, turn off the radio in areas where signs are posted to do so.
- The device complies with RF specifications when the device used at 5mm from your body. Third-party belt-clips, holsters, and similar accessories used by this device should not contain any metallic components. Body-worn accessories that do not meet these requirements may not comply with RF exposure requirements and should be avoided.
- DO NOT operate the transmitter in areas that are sensitive to electromagnetic radiation such as hospitals, aircraft, and blasting sites.

Avoid Choking Hazard



Small Parts. Not for children under 3 years.

Protect your hearing:



WARNING

- Use the lowest volume necessary to do your job.
- Turn up the volume only if you are in noisy surroundings.
- Turn down the volume before adding headset or earpiece.
- Limit the amount of time you use headsets or earpieces at high volume.
- When using the radio without a headset or earpiece, do not place the radio's speaker directly against your ear
- Use careful with the earphone maybe possible excessive sound pressure from earphones and headphones can cause hearing loss



Note: Exposure to loud noises from any source for extended periods of time may temporarily or permanently affect your hearing. The louder the radio's volume, the less time is required before your hearing could be affected. Hearing damage from loud noise is sometimes undetectable at first and can have a cumulative effect.

Avoid Burns

Antennas

- Do not use any portable radio that has a damaged antenna. If a damaged antenna comes into contact with the skin when the radio is in use, a minor burn can result.



Batteries (If appropriate)

- When the conductive material such as jewelry, keys or chains touch exposed terminals of the batteries, may complete an electrical circuit (short circuit the battery) and become hot to cause bodily injury such as burns. Exercise care in handling any battery, particularly when placing it inside a pocket, purse or other container with metal objects

Long transmission

- When the transceiver is used for long transmissions, the radiator and chassis will become hot.

Safety Operation



Forbid

- Do not use charger outdoors or in moist environments, use only in dry locations /conditions.
- Do not disassemble the charger, that may result in risk of electrical shock or fire.
- Do not operate the charger if it has been broken or damaged in any way.
- Do not place a portable radio in the area over an air bag or in the air bag deployment area. The radio may be propelled with great force and cause serious injury to occupants of the vehicle when the air bag inflates.

To reduce risk

- Pull by the plug rather than the cord when disconnecting the charger.
- Unplug the charger from the AC outlet before attempting any maintenance or cleaning.
- Contact Retekeess for assistance regarding repairs and service.
- The adapter shall be installed near the equipment and shall be easily accessible
- Risk of explosion if battery is replaced by an incorrect type. Dispose of used batteries according to the instructions.
- Adapter shall be installed near the equipment and shall be easily accessible.
- The plug considered as disconnect device of adapter.
- The operating temperature of the EUT can't exceed the specified range.

Approved Accessories



- This radio meets the RF exposure guidelines when used with the Retekeess accessories supplied or designated for the product. Use of other accessories may not ensure compliance with the RF exposure guidelines and may violate regulations.
- For a list of Retekeess-approved accessories for your radio model, visit the following website: <http://www.Retekeess.com>

EU Importer:

Name: Germany Retevis Technology GmbH

Address: Uetzenacker 29,38176 wendeburg