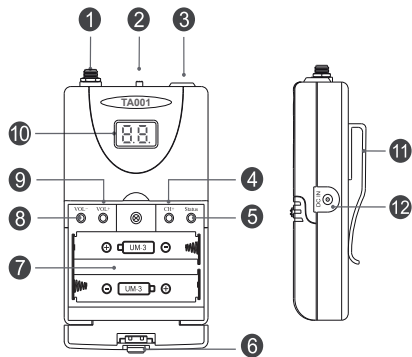


Packing list

1. Wireless Receiver x 1Pc
2. Antena x 1Pc
3. Professional stage earphone x 1Pc
4. Sling x 1Pc
5. User Manual x 1Pc

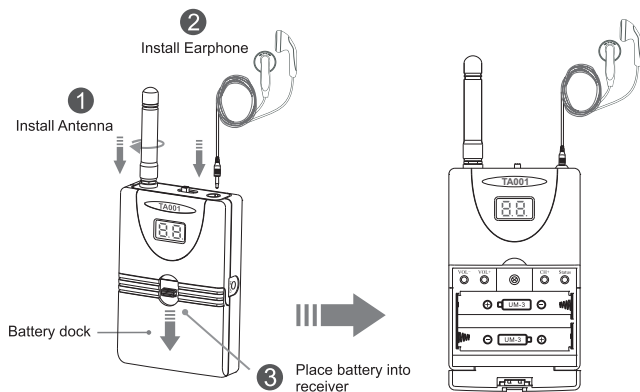
Functional Parts



2.4G tour guide transmitter & receiver

- | | | |
|-------------------|------------------------|--|
| 1 Antenna jack | 5 Status indicator LED | 9 Volume up |
| 2 Power switch | 6 Battery dock switch | 10 Channel/volume screen |
| 3 Microphone jack | 7 Battery compartment | 11 Waist clip |
| 4 Channel button | 8 Volume down | 12 External power jack (only for rechargeable battery) |

Parts Assembly



- 1 Install an antenna to the receiver.
- 2 Install an earphone to the receiver.
Push the battery dock switch to open frontside compartment and insert two AA batteries into the box and close it.
- 3 batteries into the box and close it.
- 4 If you use rechargeable batteries, You can charge the receiver through the external power jack.

Operation Instructions

When you use the tour guide system for the first time, you need to do parts assembly. In daily use, turn on the tour guide transmitter and receiver and turn off them when you don't use them

Step1. Parts assembly

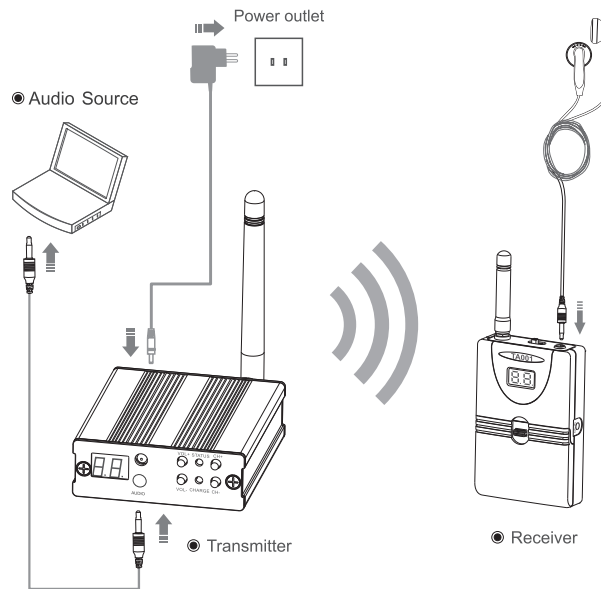
You should do parts assembly of the receiver(s) before use. The method of parts assembly is shown before.

Step2. Cable connection & turn on the transmitter

Connect the transmitter to your audio source with the audio cable, and then push the power switch to "ON" to turn on the transmitter.

Step3. Turn on the receiver & pair it with the transmitter

Push the power switch to "ON" position to turn on the receiver, press the channel button to adjust the receiver on the same channel with the transmitter, then you will hear the audio from the transmitter.



Note: There are LED display both on the transmitter and receiver. You can also adjust the transmitter channel to match with the receiver.

Step4. Adjust the volume of the transceiver system

Adjust the volume of the transmitter and receiver(s) as you like.

Step5. Turn off the system

Put the power switch to "OFF" to turn off both of the transmitter & receiver when you do not use them.

Safety Precautions and Procedures

Attention! Safety Operation Procedures: To avoid injury from electric shock adhere to the following safety procedures

- **DO NOT** place anything on top of the receiver or transmitter. Allow the unit to sit in an "open air" environment with plenty of room around it. Unit can overheat when not in an "open air" environment.
- **DO NOT** take apart the transmitters or receivers for any reason. This will void the warranty and could cause electric shock injury. There are no user replaceable parts inside the unit. Units can only be repaired / replaced by the manufacturer.

- **DO NOT** place transmitter or receiver around direct sunlight or any heat source such as electric/gas stove or heaters of any kind. Do not place near an open flame. **NOT FOLLOWING SAFETY PROCEDURES VOIDS ALL WARRANTIES!**

Declaration

1. Intellectual property right statement: The hardware and software of the product is protected by copyright law and the international convention. Without any written authorization of our company, any copy of the product or of the specifications, parts or all, will bear the corresponding legal responsibility. The brochures are company, a part or all of the manual should not be released.
2. The manual is only for reference and the ultimate practical features are depending on the products which ordered and received by users.
3. All pictures illustrate only, and product as real assessment. If the product is upgraded or changed, please forgive us will not further notice.

Trouble Shooting

1. No sound:

- Please check the receiver's battery level is sufficient or not, if the power is low, please change battery or charge(rechargeable battery).
- Maybe the receiver volume is closed, please open the battery dock and press the "VOL+" button to turn up the volume.
- Search distance is too far away, make sure the transceiver distance radius in the range of 20 meters.

2. Low sound

Recheck the volume of transmitter and the receiver in turn.

3. Anti-interference:

- Press the "CH-" or "CH+" channel button to change the transmitter's channel. The channel of receive(s) will follow up the exact channel automatically.
- If you want to avoid interference between our products and WIFI. We recommend changing the channel of the transmitter to 21-30.

4. Restore to factory setting:

Press and hold the "CH+" button of the transmitter or receiver for about 20 seconds. Release it when the channel indicator light begins to blink. Reboot the equipment and it should restore to factory settings.

Main Technical Index

Work voltage: DC3.6-6V
 Operate temperature: -25 C ~85 C
 Frequency: 2400-2483.5MHz
 Frequency response: 20Hz~20KHz
 Latency: <0.5ms
 SNR: 95 dB
 Sensitivity: ≥-90dB
 Transmit power: 0~20dBm
 THD: 0.3%@1KHz
 Sampling ratio: 64K@16bit*2
 Product size (transmitter): W=2.76"xH=3.07"xL=0.95"
 Product size (receiver): W=2.56"xH=1.34"xL=3.98"

EU Importer:
Importer:Germany Retevis Technology GmbH
Address:Uetzenacker 29,38176 wendeburg

RF ENERGY EXPOSURE AND PRODUCT SAFETY GUIDE



ATTENTION!

Before using this radio, read this guide which contains important operating instructions for safe usage and RF energy awareness and control for compliance with applicable standards and regulations.

This radio uses electromagnetic energy in the radio frequency (RF) spectrum to provide communications between two or more users over a distance. RF energy, which when used improperly, can cause biological damage. All Reteless radios are designed, manufactured, and tested to ensure they meet government-established RF exposure levels. In addition, manufacturers also recommend specific operating instructions to users of the radios. These instructions are important because they inform users about RF energy exposure and provide simple procedures on how to control it. Please refer to the following websites for more information on what RF energy exposure is and how to control your exposure to assure compliance with established RF exposure limits: <http://www.who.int/en/>

Local Government Regulations

When radios are used as a consequence of employment, the Local Government Regulations requires users to be fully aware of and able to control their exposure to meet occupational requirements. Exposure awareness can be facilitated by the use of a product label directing users to specific user awareness information. Your Reteless radio has a RF Exposure Product Label. Also, your Reteless user manual, or separate safety booklet includes information and operating instructions required to control your RF exposure and to satisfy compliance requirements.

Radio License (if appropriate)

Governments keep the radios in classification, business radios operate on radio frequencies that are regulated by the local radio management departments (FCC, ISSED, OFCOM, ANFR, BFTK, Bundesnetzagentur...). To transmit on these frequencies, you are required to have a license issued by them. The detailed classification and the use of your radios, please contact the local government radio management departments.

Use of this radio outside the country where it was intended to be distributed is subject to government regulations and may be prohibited.

Unauthorized modification and adjustment

Changes or modifications not expressly approved by the party responsible for compliance may void the user's authority granted by the local government radio management departments to operate this radio and should not be made. To comply with the corresponding requirements, transmitter adjustments should be made only by or under the supervision of a person certified as technically qualified to perform transmitter maintenance and repairs in the private land mobile and fixed services as certified by an organization representative of the user of those services. Replacement of any transmitter component (crystal, semiconductor, etc.) not authorized by the local government radio management departments equipment authorization for this radio could violate the rules.

FCC Requirements:


- This device complies with part 15 of the FCC Rules. Operation is subject to the following two conditions:
 - (1) This device may not cause harmful interference, and
 - (2) this device must accept any interference received, including interference that may cause undesired operation.
- This equipment has been tested and found to comply with the limits for a Class B digital device, pursuant to Part 15 of the FCC Rules. These limits are designed to provide reasonable protection against harmful interference in a residential installation.

This equipment generates uses and can radiate radio frequency energy and, if not installed and used in accordance with the instructions, may cause harmful interference to radio communications. However, there is no guarantee that interference will not occur in a particular installation. If this equipment does cause harmful interference to radio or television reception, which can be determined by turning the equipment off and on, the user is encouraged to try to correct the interference by one or more of the following measures:

- Reorient or relocate the receiving antenna.

- Increase the separation between the equipment and receiver.
- Connect the equipment into an outlet on a circuit different from that to which the receiver is connected.
- Consult the dealer or an experienced radio/TV technician for help.

CE Requirements:

- (Simple EU declaration of conformity) Henan Eshow Electronic Commerce Co., Ltd declares that the radio equipment type is in compliance with the essential requirements and other relevant provisions of RED Directive 2014/53/EU and the ROHS Directive 2011/65/EU and the WEEE Directive 2012/19/EU; the full text of the EU declaration of conformity is available at the following internet address: www.retekess.com.
- Disposal
The crossed-out wheeled-bin symbol on your product, literature, or packaging reminds you that in the European Union, all electrical and electronic products, batteries, and accumulators (rechargeable batteries) must be taken to designated collection locations at the end of their working life.  Do not dispose of these products as unsorted municipal waste. Dispose of them according to the laws in your area.

IC Requirements:

Licence-exempt radio apparatus
This device contains licence-exempt transmitter(s)/receiver(s) that comply with Innovation, Science and Economic Development Canada's licence-exempt RSS (s). Operation is subject to the following two conditions:

- (1) This device may not cause interference.
- (2) This device must accept any interference, including interference that may cause undesired operation of the device.

Le présent appareil est conforme aux CNR d'Industrie Canada applicables aux appareils radio exempts de licence. L'exploitation est autorisée aux deux conditions suivantes :

- (1) l'appareil ne doit pas produire de brouillage;
- (2) l'utilisateur de l'appareil doit accepter tout brouillage radioélectrique subi, même si le brouillage est susceptible d'en compromettre le fonctionnement.

RF Exposure Information

- DO NOT operate the radio without a proper antenna attached, as this may damage the radio and may also cause you to exceed RF exposure limits. A proper antenna is the antenna supplied with this radio by the manufacturer or an antenna specifically authorized by the manufacturer for use with this radio, and the antenna gain shall not exceed the specified gain by the manufacturer declared.
- DO NOT transmit for more than 50% of total radio use time, more than 50% of the time can cause RF exposure compliance requirements to be exceeded.
- During transmissions, your radio generates RF energy that can possibly cause interference with other devices or systems. To avoid such interference, turn off the radio in areas where signs are posted to do so.
- The device complies with RF specifications when the device used at 5mm from your body. Third-party belt-clips, holsters, and similar accessories used by this device should not contain any metallic components. Body-worn accessories that do not meet these requirements may not comply with RF exposure requirements and should be avoided.
- DO NOT operate the transmitter in areas that are sensitive to electromagnetic radiation such as hospitals, aircraft, and blasting sites.

Avoid Choking Hazard




Small Parts. Not for children under 3 years.

Protect your hearing:



- Use the lowest volume necessary to do your job.
- Turn up the volume only if you are in noisy surroundings.
- Turn down the volume before adding headset or earpiece.
- Limit the amount of time you use headsets or earpieces at high volume.
- When using the radio without a headset or earpiece, do not place the radio's speaker directly against your ear.

- Use careful with the earphone maybe possible excessive sound pressure from earphones and headphones can cause hearing loss. 
- Note: Exposure to loud noises from any source for extended periods of time may temporarily or permanently affect your hearing. The louder the radio's volume, the less time is required before your hearing could be affected. Hearing damage from loud noise is sometimes undetectable at first and can have a cumulative effect.

Avoid Burns



- Antennas
- Do not use any portable radio that has a damaged antenna. If a damaged antenna comes into contact with the skin when the radio is in use, a minor burn can result.
- Batteries (If appropriate)
- When the conductive material such as jewelry, keys or chains touch exposed terminals of the batteries, may complete an electrical circuit (short circuit the battery) and become hot to cause bodily injury such as burns. Exercise care in handling any battery, particularly when placing it inside a pocket, purse or other container with metal objects
 - Long transmission
 - When the transceiver is used for long transmissions, the radiator and chassis will become hot.

Safety Operation



- Forbid
- Do not use charger outdoors or in moist environments, use only in dry locations/conditions.
 - Do not disassemble the charger, that may result in risk of electrical shock or fire.
 - Do not operate the charger if it has been broken or damaged in any way.
 - Do not place a portable radio in the area over an air bag or in the air bag deployment area. The radio may be propelled with great force and cause serious injury to occupants of the vehicle when the air bag inflates.
- To reduce risk
- Pull by the plug rather than the cord when disconnecting the charger.
 - Unplug the charger from the AC outlet before attempting any maintenance or cleaning.
 - Contact Reteless for assistance regarding repairs and service.
 - The adapter shall be installed near the equipment and shall be easily accessible
 - Risk of explosion if battery is replaced by an incorrect type. Dispose of used batteries according to the instructions.
 - Adapter shall be installed near the equipment and shall be easily accessible.
 - The plug considered as disconnect device of adapter.
 - The operating temperature of the EUT can't exceed the specified range.

Approved Accessories



- This radio meets the RF exposure guidelines when used with the Reteless accessories supplied or designated for the product. Use of other accessories may not ensure compliance with the RF exposure guidelines and may violate regulations.
- For a list of Reteless-approved accessories for your radio model, visit the following website: <http://www.Retekess.com>