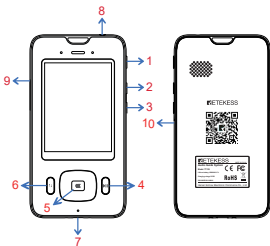


Product Overview

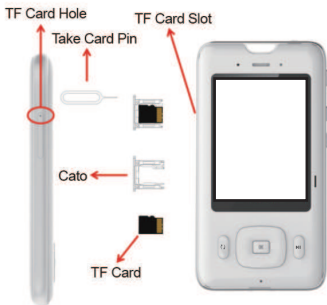


- 1.Power On/Off Button
 - 2.Volume Up Button
 - 3.Volume Down Button
 - 4.Play/Pause/Replay Button (Short press to Play or Pause the audio. After one audio is finished, you could short play this button to reply the audio.)
 - 5.Confirm Button (After selecting the language you need to listen, press this button to confirm)
 - 6.Select Language Button (English/German/French/Spanish/Italian/Russian/Chinese)
- Note: You need to inbuilt playback file in different languages if you want customers to be able to select the language to listen)
- 7.Charging Port
 - 8.Earphone Jack
 - 9.TF Card Port
 - 10.Reset Button

Functions

- GPS and BDS triggers option, built-in high sensitivity ceramic antenna, fast and accurate to locate the receiver.
- 2.8" TNT HD full-color screen with 240 * 320 resolution
- Automatic detection of altitude and temperature and always show on the display, visitors can view this information in real time
- RFID wireless triggering tech, automatic positioning and audio play, automated guide without narrator
- Built-in multiple languages can be freely converted

Installation Before Use



Insert Card: Put the TF card to the cato, then insert the cato into the card slot of the device (Please be careful not to reverse the direction of the card)

Pull Out Card: Insert the pin in the TF card hold and press, the cato will pop up automatically. Then remove the pin, and finally pull out the card cato and take the TF card.

The Inbuilt Playback File Configuration Format of the TF Card in the Audio Guide System

(Note: The audio guide system must be off while connecting it to the PC with a data line, then turn it on after it connect well)
In order to make the audio guide system work properly, the inbuilt player file must be configured well according to the following requirements before using the equipment.

1, Create a named TRAVEL folder on the TF card, then all the other files are placed under the corresponding subfolders of the TRAVEL folder. The subfolders include:

A, CHN: Chinese audio file. It includes audio player file "travelplay", Chinese name display file "travelshow" and all the Chinese audio files which in MP3 format.

B, ENGLISH: English audio file. It includes audio player file "travelplay", English name display file "travelshow" and all the English audio files which in MP3 format.

NOTE: ALL THE OTHER LANGUAGES FILES FORMAT ARE SAME AS THE CHINESE AND ENGLISH FILES.

C, Trigger configuration file "travelpos", used for the audio guide system to trigger audio broadcasts based on longitude and latitude calculations

2, Use the NOTEPAD to open the audio player file "travelplay" and name display file "travelshow", the details format should be as following:

"travelplay" source file

3|70002100,70002100.mp3;70002101,70002101.mp3;70002102,70002102.mp3;

3 is for the number of attractions

70002100 is the ID assigned to each attraction

70002100.mp3 is the audio file in MP3 format corresponding to the attraction

| is the separator in English input method

, is the comma in English input method

"travelshow" source file

3|70002100,(Sea World);70002101,(Citizens Center);70002102,(Lotus Hill)

3 is for the number of attractions

70002100 is the ID assigned to each attraction

(Sea World) is the attraction name for the corresponding attraction

| is the separator in English input method

, is the comma in English input method

"travelpos" source file (this file only need when the audio guide system uses GPS trigger)

3|104.062136,30.543444,100,70002100;104.064342,30.544612,100,70002101;104.068287,30.552838,100,70002102;

3 is for the number of attractions

104.062136 is the longitude of the attraction (East longitude is positive number, west longitude is negative number. The positive signs can be omitted)

30.543444 is the latitude of the attraction (North latitude is positive, south latitude is negative. The positive signs can be omitted.)

300 is stand for the trigger radius from the attraction, the unit is "m"

70002100 is the ID assigned to each attraction

| is the separator in English input method

, is the comma in English input method

; is the semicolon in English input method

These files can be edited with Notepad, and then saved in ANSI format.

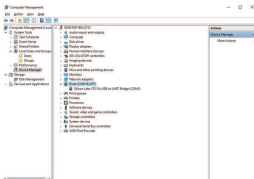
The main TRAVEL folder and other mentioned subfolders above must be created and assigned the corresponding files (Language folders can be created as needed). Otherwise, when the visitors select the language on the audio guide system, the device will not play properly attractions audio and not display the correct attraction name.

RFID tag writer Operation

The tag writer need to connect with the PC through the USB cable while using

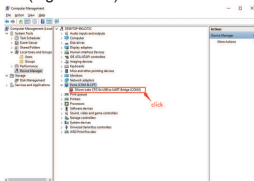


You need to install the driver for the first use of the tag writer (The drivers for Win7 and Win10). After the driver is installed, please check if the installation is successful or not as follows: My Computer--Management--Computer Management--Ports, if you could find the CP210X USB to UART, that shows done. (Figure 1)



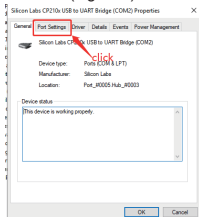
(Figure 1)

The COM3 in the above picture, if the number after COM is greater than 9, you need to change it to a port which less than 10. (Figure 2/3/4)

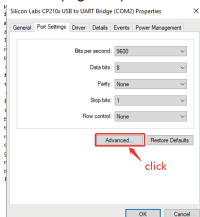


(Figure 2)

(Figure 3)

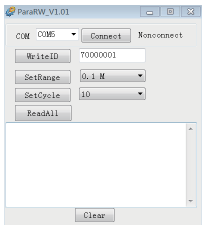


(Figure 4)



After the driver is successfully installed, open the configuration tool (Figure 5)

(Figure 5)



Configuration steps

- 1.Put the Trigger on the Tag Writer
- 2.Select the correct port
- 3.Click "Connect"
- 4.Write ID--which assigned to the attraction (8 bytes)
Set Range--Set the transmission range of the Trigger
Set Cycle--Set the number of send per second of Trigger
(Used to control the power consumption of the Trigger)
Read All--Read all the data of the Trigger
Clear-- Clear all the data in the display box
- 5.There is a text prompt when the operation is successful.

RF ENERGY EXPOSURE AND PRODUCT SAFETY GUIDE



ATTENTION!

Before using this radio, read this guide which contains important operating instructions for safe usage and rf energy awareness and control for compliance with applicable standards and regulations.

Local Government Regulations

When radios are used as a consequence of employment, the Local Government Regulations requires users to be fully aware of and able to control their exposure to meet occupational requirements.

Exposure awareness can be facilitated by the use of a product label directing users to specific user awareness information. Your Reteless radio has a RF Exposure Product Label. Also, your Reteless user manual, or separate safety booklet includes information and operating instructions required to control your RF exposure and to satisfy compliance requirements.

Unauthorized modification and adjustment

Changes or modifications not expressly approved by the party responsible for compliance may void the user's authority granted by the local government radio management departments to operate this radio and should not be made. To comply with the corresponding requirements, transmitter adjustments should be made only by or under the supervision of a person certified as technically qualified to perform transmitter maintenance and repairs in the private land mobile and fixed services as certified by an organization representative of the user of those services. Replacement of any transmitter component (crystal, semiconductor, etc.) not authorized by the local government radio management departments equipment authorization for this radio could violate the rules.

FCC Requirements:

•This device complies with part 15 of the FCC Rules. Operation is subject to the following two conditions:

- (1) This device may not cause harmful interference, and
- (2) this device must accept any interference received, including interference that may cause undesired operation.

•This equipment has been tested and found to comply with the limits for a Class B digital device, pursuant to Part 15 of the FCC Rules. These limits are designed to provide reasonable protection against harmful interference in a residential installation.

This equipment generates uses and can radiate radio frequency energy and, if not installed and used in accordance with the instructions, may cause harmful interference to radio communications. However, there is no guarantee that interference will not occur in a particular installation. If this equipment does cause harmful interference to radio or television reception, which can be determined by turning the equipment off and on, the user is encouraged to try to correct the interference by one or more of the following measures:

- Reorient or relocate the receiving antenna.
- Increase the separation between the equipment and receiver.
- Connect the equipment into an outlet on a circuit different from that to which the receiver is connected.
- Consult the dealer or an experienced radio/TV technician for help.

CE Requirements:

•(Simple EU declaration of conformity) Henan Eshow Electronic Commerce Co.,Ltd declares that the radio equipment type is in compliance with the essential requirements and other relevant provisions of RED Directive 2014/53/EU and the ROHS Directive 2011/65/EU and the WEEE Directive 2012/19/EU; the full text of the EU declaration of conformity is available at the following internet address:

www.retekess.com.

•Disposal

The crossed-out wheeled-bin symbol on your product, literature, or packaging reminds you that in the European Union, all electrical and electronic products, batteries, and accumulators (rechargeable batteries) must be taken to designated collection locations at the end of their working life. Do not dispose of these products as unsorted municipal waste. Dispose of them according to the laws in your area.



IC Requirements:

Licence-exempt radio apparatus

This device contains licence-exempt transmitter(s)/receiver(s) that comply with Innovation, Science and Economic Development Canada's licence-exempt RSS(s). Operation is subject to the following two conditions:

- (1) This device may not cause interference.
- (2) This device must accept any interference, including interference that may cause undesired operation of the device.

Le présent appareil est conforme aux CNR d'Industrie Canada applicables aux appareils radio exempts de licence. L'exploitation est autorisée aux deux conditions suivantes :

- (1) l'appareil ne doit pas produire de brouillage;
- (2) l'utilisateur de l'appareil doit accepter tout brouillage radioélectrique subi, même si le brouillage est susceptible d'en compromettre le fonctionnement.

RF Warning Statements

The device has been evaluated to meet general RF exposure requirement. The device can be used in portable exposure condition without restriction.

RF Exposure Information

- DO NOT operate the radio without a proper antenna attached, as this may damage the radio and may also cause you to exceed RF exposure limits. A proper antenna is the antenna supplied with this radio by the manufacturer or an antenna specifically authorized by the manufacturer for use with this radio, and the antenna gain shall not exceed the specified gain by the manufacturer declared.
- To avoid interference, turn off the radio in areas where signs are posted to do so.
- DO NOT operate the transmitter in areas that are sensitive to electromagnetic radiation such as hospitals, aircraft, and blasting sites.



Small Parts. Not for children under 3 years.



WARNING

- This radio meets the RF exposure guidelines when used with the Reteless accessories supplied or designated for the product. Use of other accessories may not ensure compliance with the RF exposure guidelines and may violate regulations.
- For a list of Reteless-approved accessories for your radio model, visit the following website: <http://www.Reteless.com>



WARNING

- Use the lowest volume necessary to do your job.
 - Turn up the volume only if you are in noisy surroundings.
 - Turn down the volume before adding headset or earpiece.
 - Limit the amount of time you use headsets or earpieces at high volume.
 - When using the radio without a headset or earpiece, do not place the radio's speaker directly against your ear
 - Use careful with the earphone maybe possible excessive sound pressure from earphones and headphones can cause hearing loss
- Note: Exposure to loud noises from any source for extended periods of time may temporarily or permanently affect your hearing. The louder the radio's volume, the less time is required before your hearing could be affected. Hearing damage from loud noise is sometimes undetectable at first and can have a cumulative effect.

Guarantee

Model Number: _____

Serial Number: _____

Purchasing Date: _____

Dealer: _____ Telephone: _____

User's Name: _____ Telephone: _____

Country: _____ Address: _____

Post Code: _____ Email: _____

Remarks:

1. This guarantee card should be kept by the user, no replacement if lost.

2. Most new products carry a two-year manufacturer's warranty from the date of purchase.

3. The user can get warranty and after-sales service as below:

- Contact the seller where you buy.
- Products Repaired by Our Local Repair Center

4. For warranty service, you will need to provide a receipt proof of purchase from the actual seller for verification

Exclusions from Warranty Coverage:

1. To any product damaged by accident.

2. In the event of misuse or abuse of the product or as a result of unauthorized alterations or repairs.

3. If the serial number has been altered, defaced, or removed.



MADE IN CHINA

CE **FC** **RoHS**  

Henan Eshow Electronic Commerce Co., Ltd

Add: 7/F, Sanjiang Building, No.170 Nanyang Road, Huiji District,
Zhengzhou, Henan, China

EU Importer: Germany Retevis Technology GmbH

Address: Uetzenacker 29,38176 wendeburg

Facebook: facebook.com/Retekess.ru

E-mail: support@rettekess.com.ru

Web: rettekess.com.ru